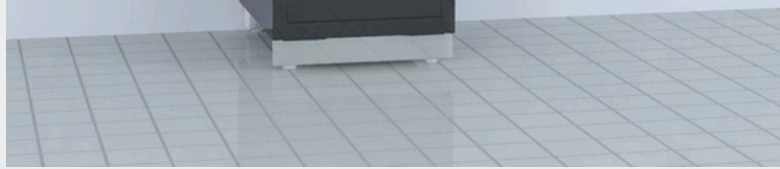




WORKBENCHING SOLUTIONS



FOR
CAR &
COMMERCIAL
WORKSHOPS
2024



THE UNSUNG HERO OF WORKSHOP EFFICIENCY



THE WORKBENCH SYSTEM



Making a workshop look professional, clean, tidy and an efficient working environment incorporating a thoughtfully laid out cabinetry solution is becoming a more common sight in new and refurbished workshops.

Straightset offer an easy to understand menu of storage solutions most commonly required in a garage.



WORKSHOP BENCHING OPTIONS

Tool Benches with drawers



Code: SST1B

SINGLE TOOL BENCH WITH DRAWERS

- Single tool bench with 6 drawers in a variety of depths
- Lockable cabinet
- Non-slip drawer mats
- Drawers hold 100kg capacity
- 740w x 609 x 956h (mm) as standard c/w worktop



Code: SST1D

DOUBLE TOOL BENCH WITH DRAWERS

- Double tool bench with full width top draw and 10 drawers in a variety of depths
- Lockable cabinet
- Non-slip drawer mats
- Drawers hold 100kg capacity
- 1200w x 609 x 956h (mm) as standard c/w worktop



Code: SST1

LARGE DOUBLE TOOL BENCH WITH DRAWERS

- Large double tool bench with 12 drawers in a variety of depths - one set wider than the other
- Lockable cabinets
- Non-slip drawer mats
- Drawers hold 100kg capacity
- 1575w x 609 x 956h (mm) as standard c/w worktop

Drawers

Cabinets

Dispensing

Combination

Customise



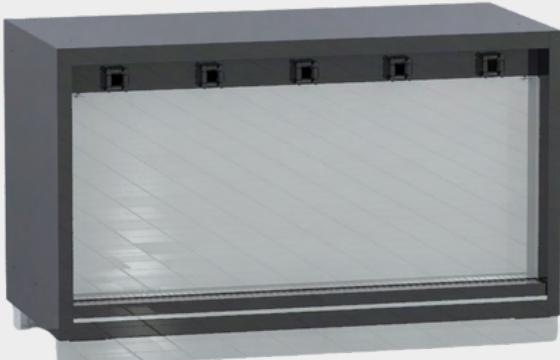
WORKSHOP BENCHING OPTIONS

Storage Cabinets

 <p>Code: SST2</p>	<p>TRASH CABINETS</p> <ul style="list-style-type: none">• Single drawer opening cabinet complete with 2 removable containers as standard• 549w x 700 x 956h (mm) as standard c/w worktop
 <p>Code: SST3</p>	<p>STORAGE CABINETS</p> <ul style="list-style-type: none">• Single door opening storage cabinet, complete with 1 adjustable shelf• 549w x 700 x 956h (mm) as standard c/w worktop
 <p>Code: SST8A</p>	<p>SINGLE OPEN BOTTOM CABINET</p> <ul style="list-style-type: none">• Single cabinet with open bottom for storing floor mounted items i.e. tool carts• 549w x 700 x 956h (mm) as standard c/w worktop

WORKSHOP BENCHING OPTIONS

Dispensing Cabinets

 <p>Code: SST4</p>	<p>GLOVE /TOWEL DISPENSING CABINET</p> <ul style="list-style-type: none">• Single drawer opening cabinet for glove / towel dispensing• 549w x 700 x 956h (mm) as standard c/w worktop
 <p>Code: SST6</p>	<p>2 REEL SERVICE CABINET</p> <ul style="list-style-type: none">• Single cabinet with 2 reel dispensers complete with built in drip tray• 600w x 700 x 956h (mm) as standard c/w worktop• Option available with lift control panel • Range of dispensing reels available
 <p>Code: SST5</p>	<p>5 REEL SERVICE CABINET</p> <ul style="list-style-type: none">• Double size cabinet with 5 reel dispensers complete with built in drip tray• 1500w x 700 x 956h (mm) as standard c/w worktop • Range of dispensing reels available

WORKSHOP BENCHING OPTIONS

Combination Cabinets



Code: SST1C

MOBILE COMBINATION BENCH/ STORAGE CABINET

- Combined lockable drawers and storage cabinet
- Mobile on lockable castors
- 1200w x 665 x 933h (mm)



Code: SST8B

TOOL CARTS

- Mobile tool carts on wheel castors complete with none slip linings for storage within open bottom cabinet
- 2 lockable castors
- 380w x 611 x 819h (mm)
- Options for tool cart for use without storage cabinet available



Code: SST15

UPPER STORAGE CABINETS

- Top storage cabinets
- Wall mountable
- Gas strut doors
- Single cabinets: 549w x 385 x 475h
- Double cabinets:
1200w x 385 x 475h (mm) - SST16
1500w x 385 x 475h (mm) - SST17

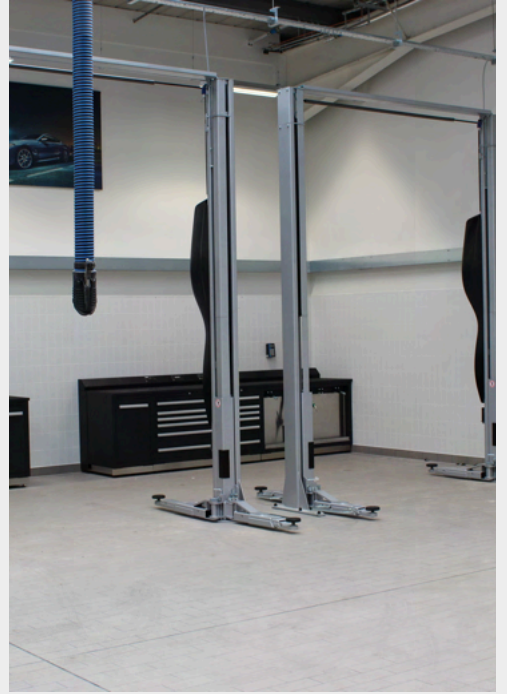
Drawers

Cabinets

Dispensing

Combination

Customise

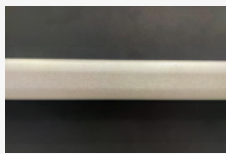




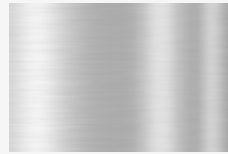
WORKSHOP BENCHING

AS STANDARD

CABINETS

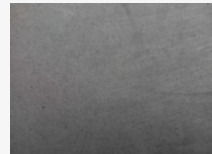


Satin Black with metallic silver handles



Levelling feet and height adjustable kick strip

WORKTOPS



EVA non slip mat



22mm solid wood core, 1.2m thick painted steel overlay

SPECIFICATIONS

Drawer Cabinet depth	609mm
Drawer capacity	100kg
Cabinet depth	700mm
Adjustable kick plinths	1.5mm
Cabinet steel thickness	1.2mm
Worktop depth	630mm

Drawers

Cabinets

Dispensing

Combination

Customise



WORKSHOP BENCHING

CUSTOM FEATURES



3mm rubber matting



Worktop power and data channelling



Foam inlays with Bahco tools

Range of customisable features available upon consultation; including RAL colours, configuration of drawers, worktop depths, custom design service to suit your workshop.

Available supply only or with installation services.

About Straightset

Straightset is a leading Garage Equipment company with over 38 years experience in car and commercial workshop installations and aftercare servicing.

Straightset have an experienced project team who will help advise on the right workbenching solution to fit our space and requirements. Our solutions are expertly installed by our dedicated team of engineers.

Contact Straightset on info@straightset.co.uk.

Drawers

Cabinets

Dispensing

Combination

Customise



Straightset
Stadium Close
Worksop
Nottinghamshire
S81 7BT

www.straightset.co.uk
info@straightset.co.uk

